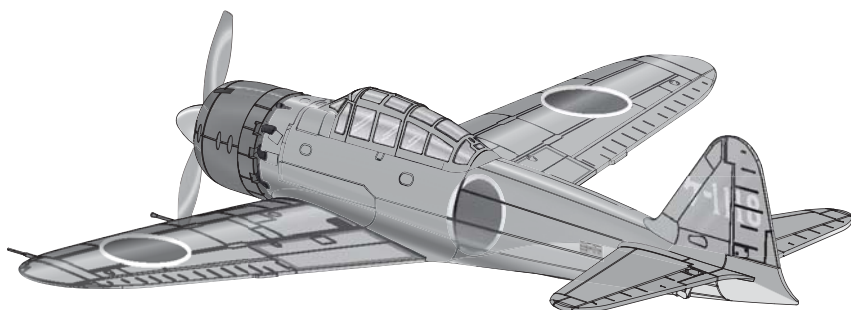




A6M5 Zero 300



***Instruction Manual
Bedienungsanleitung
Manuel d'utilisation
Manuale di Istruzioni***

E-flite[®]
ADVANCING ELECTRIC FLIGHT

NOTICE

All instructions, warranties and other collateral documents are subject to change at the sole discretion of Horizon Hobby, Inc. For up-to-date product literature, visit www.horizonhobby.com and click on the support tab for this product.


Meaning of Special Language:

The following terms are used throughout the product literature to indicate various levels of potential harm when operating this product:

NOTICE: Procedures, which if not properly followed, create a possibility of physical property damage AND little or no possibility of injury.

CAUTION: Procedures, which if not properly followed, create the probability of physical property damage AND a possibility of serious injury.

WARNING: Procedures, which if not properly followed, create the probability of property damage, collateral damage, and serious injury OR create a high probability of superficial injury.

 **WARNING:** Read the ENTIRE instruction manual to become familiar with the features of the product before operating. Failure to operate the product correctly can result in damage to the product, personal property and cause serious injury.

This is a sophisticated hobby product. It must be operated with caution and common sense and requires some basic mechanical ability. Failure to operate this product in a safe and responsible manner could result in injury or damage to the product or other property. This product is not intended for use by children without direct adult supervision. Do not use with incompatible components or alter this product in any way outside of the instructions provided by Horizon Hobby, Inc. This manual contains instructions for safety, operation and maintenance. It is essential to read and follow all the instructions and warnings in the manual, prior to assembly, setup or use, in order to operate correctly and avoid damage or serious injury.

Age Recommendation: Not for children under 14 years. This is not a toy.

Safety Precautions and Warnings

- Always keep a safe distance in all directions around your model to avoid collisions or injury. This model is controlled by a radio signal subject to interference from many sources outside your control. Interference can cause momentary loss of control.
- Always operate your model in open spaces away from full-size vehicles, traffic and people.
- Always carefully follow the directions and warnings for this and any optional support equipment (chargers, rechargeable battery packs, etc.).
- Always keep all chemicals, small parts and anything electrical out of the reach of children.
- Always avoid water exposure to all equipment not specifically designed and protected for this purpose. Moisture causes damage to electronics.
- Never place any portion of the model in your mouth as it could cause serious injury or even death.
- Never operate your model with low transmitter batteries.
- Always keep aircraft in sight and under control.
- Always use fully charged batteries.
- Always keep transmitter powered on while aircraft is powered.
- Always remove batteries before disassembly.
- Always keep moving parts clean.
- Always keep parts dry.
- Always let parts cool after use before touching.
- Always remove batteries after use.
- Always ensure failsafe is properly set before flying.
- Never operate aircraft with damaged wiring.
- Never touch moving parts.

Thank you for purchasing the E-flite® A6M5 Zero 300 BNF-Basic. E-flite has captured the character of the infamous Japanese WWII fighter in a fun-to-fly RC warbird modeled after Zeros stationed at the Genzan Air Base in Korea in 1945. Molded in a smooth and durable foam material, its outline, detail and markings have been faithfully duplicated and very few design liberties were taken to achieve excellent flight performance. This allows the stunning scale appearance to shine through both on the ground and in flight. In fact, the fit and finish of this electric powered, 4-channel warbird is so impeccable that it can also serve as an impressive display model when mounted on the included static display stand. Please be sure to read through this manual carefully so that you can successfully enjoy all the benefits this outstanding E-flite model has to offer.

Box Contents

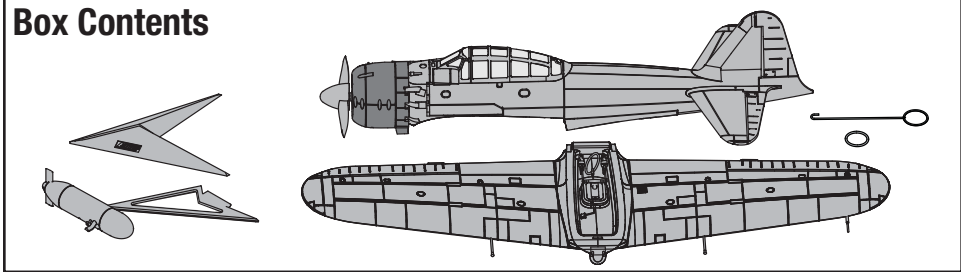
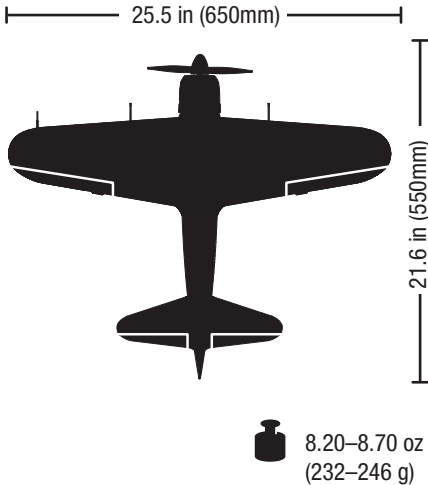


Table of Contents

Preflight Checklist.....	4	Flying Tips and Repairs	9
Transmitter and Receiver Binding	4	Using the Display Stand	10
Low Voltage Cutoff (LVC)	4	Service of Power Components	11
Installing the Flight Battery	5	Troubleshooting Guide	12
Arming the ESC	5	Limited Warranty	13
Installing the Wing	6	Warranty and Service Information	14
Control Centering	7	Compliance Information for the European Union....	14
Settings for Control Horns.....	7	Replacement Parts.....	54
Control Direction Test	7	Optional Parts and Accessories	55
Dual Rates and Expos	8	Parts Contact Information	55
Adjusting Center of Gravity (CG)	8		



Installed

- Motor:** BL300 Brushless Outrunner, 1400Kv (EFLM7000)
- BL Controller, 10A (EFLA7300)
- AR6310 DSMX Nanolite 6Ch Rx,Air (SPMAR6310)
- (3) 3.5 g Digital Servo (EFLR7100)

Needed to Complete

- Recommended Battery:** 430mAh 2S 20C Li-Po (EFLB4302S.J)
- Recommended Battery Charger:** Celectra™ 80W AC/DC Multi-Chemistry Battery Charger (EFLC3025)
- Recommended Transmitter:** Full Range DSM2®/DSMX® (DX4e and up)

Preflight Checklist

✓	
	1. Charge flight battery.
	2. Install flight battery in aircraft (once it has been fully charged).
	3. Bind aircraft to transmitter.
	4. Make sure linkages move freely.
	5. Perform Control Direction Test with transmitter.
	6. Adjust center of gravity.
	7. Perform a radio system Range Check.
	8. Find a safe and open area.
	9. Plan flight for flying field conditions.

Low Voltage Cutoff (LVC)

When a Li-Po battery is discharged below 3V per cell, it will not hold a charge. The aircraft's ESC protects the flight battery from over-discharge using Low Voltage Cutoff (LVC). Once the battery discharges to 3V per cell, the LVC will reduce the power to the motor in order to leave adequate power to the receiver and servos to land the airplane.

When the motor power reduces, land the aircraft immediately and replace or recharge the flight battery.

Always disconnect and remove the Li-Po battery from the aircraft after each flight. Charge your Li-Po battery to about half capacity before storage. Make sure the battery charge does not fall below 3V per cell. A connected battery will result in trickle discharge.

For your first flights, set your transmitter timer or a stopwatch to 4 minutes. Adjust your timer for longer or shorter flights once you have flown the model. Flights of 6 minutes or more are achievable if using proper throttle management.

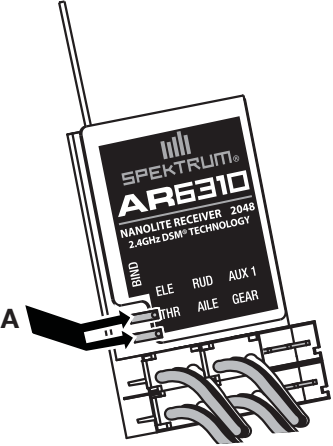
NOTICE: Repeated flying to LVC will damage the battery.

Transmitter and Receiver Binding

Binding is the process of programming the receiver of the control unit to recognize the GUID (Globally Unique Identifier) code of a single specific transmitter. You need to 'bind' your chosen Spektrum™ DSM2®/DSMX® technology equipped aircraft transmitter to the receiver for proper operation.

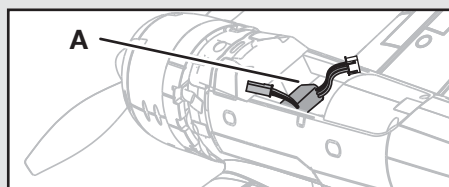
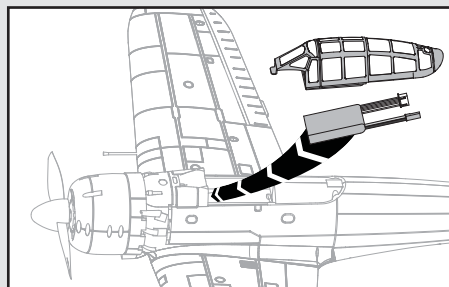
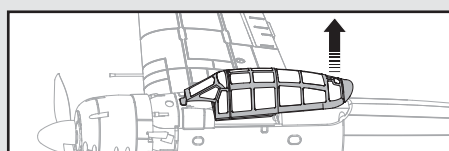
Any full range Spektrum DSM2/DSMX transmitter can bind to the DSM2/DSMX receiver. Please visit www.bndnfly.com for a complete list of compatible transmitters.

NOTICE: When using a Futaba® transmitter with a Spektrum DSM module, reversing the throttle channel is required.

✓	Binding Procedure	
	1. Refer to your transmitter's unique instructions for binding to a receiver (location of transmitter's Bind control).	
	2. Make sure the flight battery is disconnected from the aircraft.	
	3. Power off the transmitter.	
	4. Bind the AR6310 receiver to a DSM2 transmitter by shorting the bind pins (A) together with tweezers, a hemostat or small needle-nose pliers. Metal to metal contact is needed to complete the circuit. Do not bend the bind pins.	
	5. Connect the flight battery to the aircraft. Short the pins until the receiver LED begins to flash rapidly (typically after 5 seconds).	
	6. Ensure that control surface trims are centered and the throttle and throttle trim are in the low position to correctly set failsafe.	
	7. Put your transmitter into bind mode. Refer to your transmitter's manual for binding button or switch instructions.	
	8. After 5 to 10 seconds, the receiver status LED will become solid, indicating that the receiver is bound to the transmitter. If the LED does not turn solid, refer to the Troubleshooting Guide at the back of the manual.	

Installing the Flight Battery

1. Remove the canopy by gripping near the rear and pulling up, then back to disengage the canopy's front tab from the fuselage.
2. Place the flight battery in the battery compartment. Slide the battery into the battery cavity (A) towards the front of the fuselage.
See the Adjusting the Center of Gravity instructions for the battery's position.
3. Connect the fully charged flight battery to the ESC connector. **See the Arming the ESC instructions for correct connection of the battery to the ESC.**
4. Replace the canopy on the fuselage.

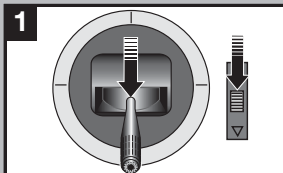


⚠ CAUTION: Always disconnect the Li-Po battery from the ESC when not flying to eliminate power supplied to the motor. The ESC does not have an arming switch, and will respond to any transmitter input when a signal is present.

⚠ CAUTION: Always disconnect the Li-Po battery from the ESC when not flying to avoid over-discharging the battery. Batteries discharged to a voltage lower than the lowest approved voltage may become damaged, resulting in loss of performance and potential fire when batteries are charged.

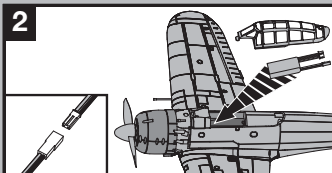
Arming the ESC

Arming the ESC also occurs after binding as previously described, but subsequent connection of a flight battery requires the steps below.

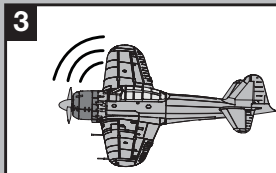


Lower throttle and throttle trim to lowest settings.

⚡ Power on the Transmitter, then wait 5 seconds



Install flight battery and connect it to the ESC.



🔊 Series of tones

💡 Continuous LED

Tip: If the ESC sounds a continuous double beep after the flight battery is connected, recharge or replace the battery.

If you accidentally connect the battery while the throttle is fully opened, a musical tone will sound after 5 seconds. Disconnect the battery immediately.

⚠ CAUTION: Always keep hands away from the propeller. When armed, the motor will turn the propeller in response to any throttle movement.

Installing the Wing

1. Turn over the model so the bottom of the fuselage faces up.
2. Carefully install the micro connector of the aileron servo (A) into the AIL port of the receiver (B).

NOTICE: When disconnecting the servo connectors, do not pull on the servo wires. Use a screwdriver or pliers to break the friction fit of the servo connectors. Failure to do so could result in damage to the servo wiring.

3. Insert the 2 wing pins (C) into the holes in the front of the fuselage. Connect the back of the wing to the fuselage.

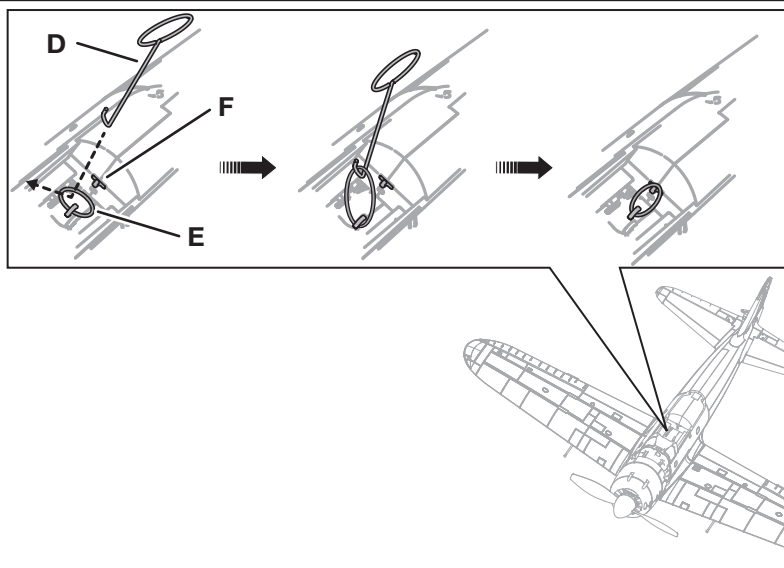
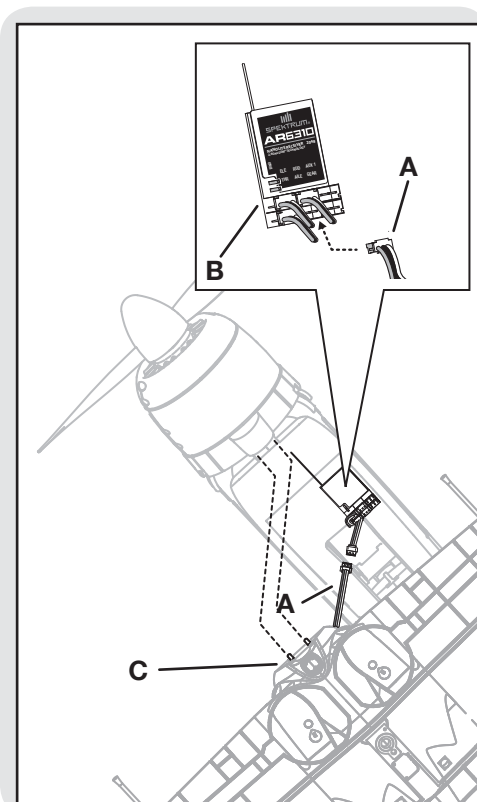
NOTICE: DO NOT crush or otherwise damage wiring when installing the wing on the fuselage.

4. Turn the aircraft right side up. Carefully use the o-ring tool (D) to pull the o-ring (E) over the hook in the fuselage (F).

NOTICE: Pulling too much on the O-ring can damage the O-ring connector in the wing, requiring replacement of the wing.

Tip: Before flying, always ensure the O-ring is in good condition. Replace a worn or inflexible O-ring.

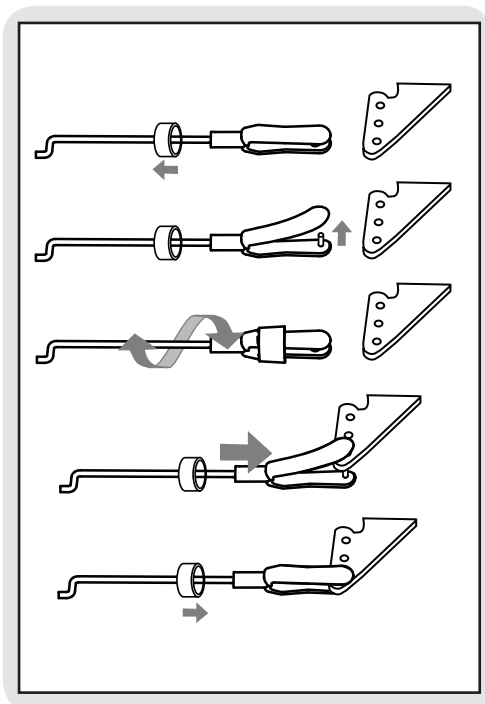
5. Install the canopy on the fuselage.



Control Centering

Before the first flights, or in the event of an accident, make sure the flight control surfaces are centered. Adjust the linkages mechanically if the control surfaces are not centered.

1. Make sure the transmitter sub-trims are set to zero and the servo arms are perpendicular to the servo case.
2. When an adjustment of linkages is needed, pull the tube from the clevis to the linkage.
3. Carefully spread the clevis and adjust the length of the linkage by screwing the clevis in or out. Reattach the clevis in the proper hole in the control horn.
4. Move the tube to tighten the clevis onto the control horn.



Settings for Control Horns

The following illustration shows the factory settings for linkages on the control horns. After flying, you may choose to adjust the linkage positions for the desired control response.

Elevator and Rudder



Control Direction Test

You should bind your aircraft and transmitter before doing these tests. Move the controls on the transmitter to make sure the aircraft control surfaces move correctly and in the proper direction.

Make sure the tail linkages move freely and that paint or decals are not adhered to them.

Dual Rates and Expos

We recommend using a DSM radio capable of dual rates. The settings below are recommended starting settings. Adjust according to individual preferences after the initial flight.

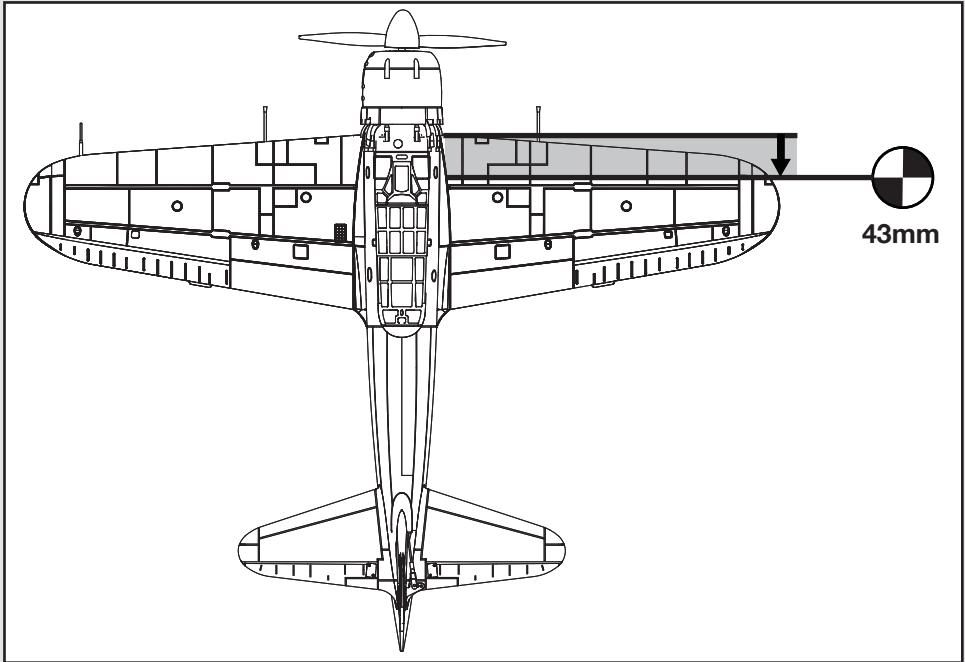
Dual Rates	High Rate	Low Rate
Aileron	7mm up/down	5mm up/down
Elevator	9mm up/down	7mm up/down
Rudder	18mm left/right	15mm left/right

Expo	High Rate	Low Rate
Aileron	25%	15%
Elevator	25%	15%
Rudder	25%	15%

Adjusting Center of Gravity (CG)

The CG location is **43mm** back from the leading edge of the wing at the root.

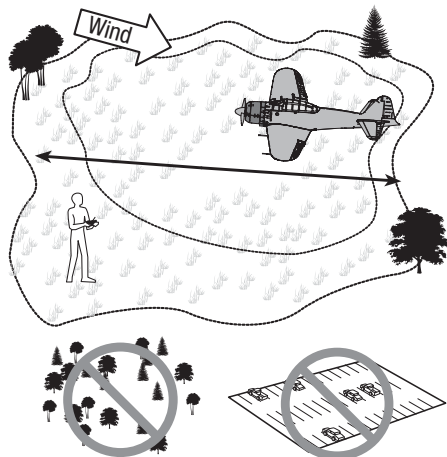
The battery cavity is oversized to allow for Center of Gravity adjustment. Start by placing the battery fully forward with the connectors facing the rear of the aircraft. Adjust as needed by sliding the battery back.



Flying Tips and Repairs

Flying

We recommend flying your E-flite® A6M5 Zero outside in no greater than moderate winds or inside in a large gymnasium. Always avoid flying near houses, trees, wires and buildings. You should also be careful to avoid flying in areas where there are many people, such as busy parks, schoolyards or soccer fields. Consult local laws and ordinances before choosing a location to fly your aircraft.



Hand launch

Get assistance to hand launch the aircraft so that you can give full attention to transmitter control. Hold the aircraft by the fuselage over the wings. Give a firm underhand throw directly into the wind slightly up (5–10 degrees above the horizon) with full throttle. After the aircraft gains altitude, decrease the throttle as you desire. If you have no one to launch the aircraft with you, launch the aircraft using the hand that isn't operating the elevator stick so that you have elevator control in the critical first few seconds of flight. Once you have the Zero airborne, maintain a shallow rate of climb and allow the aircraft to gain speed before making the first turn. Familiarize yourself with the flight characteristics of the Zero and practice flying the aircraft high enough so that you can recover control if it does not respond as you desire.

Landing

Make sure to land into the wind. Fly the aircraft to approximately 6 inches (15 cm) or less above the runway, using a small amount of throttle for the entire descent. Keep the throttle on until the aircraft is ready to flare. During flare, keep the wings level and the aircraft pointed into the wind. Gently lower the throttle while pulling back on the elevator to bring the aircraft down on its belly. Fully lower the throttle just before the aircraft lands to avoid propeller damage.

NOTICE: If a crash is imminent, reduce the throttle and trim fully. Failure to do so could result in extra damage to the airframe, as well as damage to the ESC and motor.

NOTICE: Crash damage is not covered under warranty.

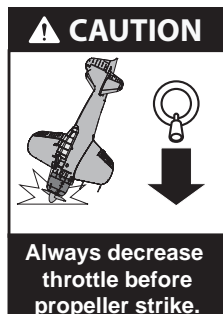
NOTICE: When you are finished flying, never keep the aircraft in the sun. Do not store the aircraft in a hot, enclosed area such as a car. Doing so can damage the foam.

Repairs

Repair this aircraft using foam-compatible CA (cyanoacrylate adhesive) glue or clear tape. Only use foam-compatible CA glue as other types of glue can damage the foam. When parts are not repairable, see the Replacement Parts List for ordering by item number.

For a listing of all replacement and optional parts, refer to the list at the back of this manual.

NOTICE: Use of foam-compatible CA accelerant on your aircraft can damage paint. DO NOT handle the aircraft until accelerant fully dries.

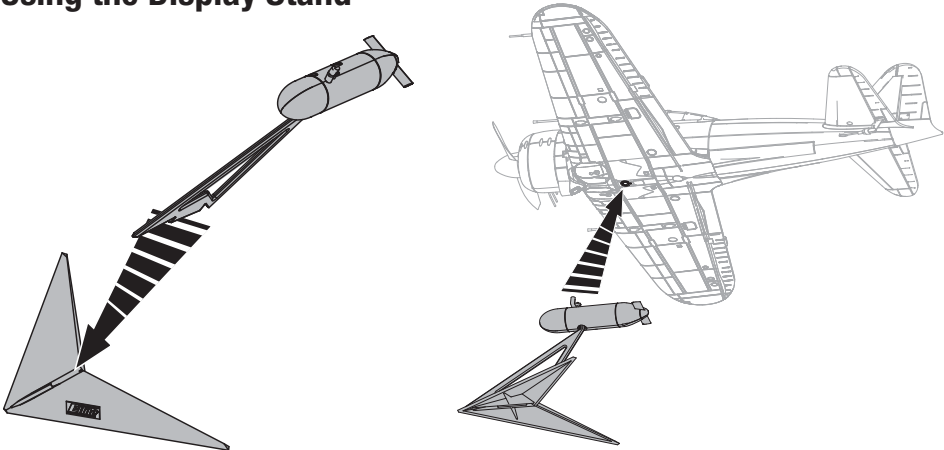


Post Flight Checklist

✓	
	1. Disconnect flight battery from ESC (Required for safety and battery life).
	2. Power off transmitter.
	3. Remove flight battery from aircraft.
	4. Recharge flight battery.

✓	
	5. Store flight battery apart from aircraft and monitor the battery charge.
	6. Make note of flight conditions and flight plan results, planning for future flights.

Using the Display Stand



Tip: Glue is not required for the assembly of the display, but may be used if the display will not be disassembled.

CAUTION: Always remove the battery before displaying the model.

NOTICE: Always remove the model from the display before adjusting the display. Failure to do so may result in damage to the model or the display.

Service of Power Components

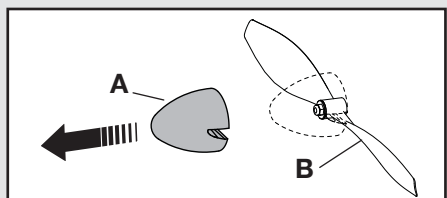
Disassembly

⚠ CAUTION: Always disconnect the battery before handling or adjusting the propeller or motor. Failure to do so could result in personal injury.

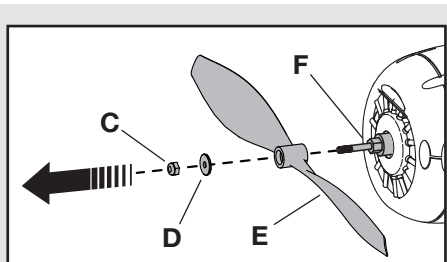
Propeller

1. Remove the spinner (A) from the propeller (B).

Before re-installing the spinner on the propeller, scrape off as much excess glue as possible, making sure not to damage the propeller blades or hub. Never operate the aircraft with a damaged propeller.

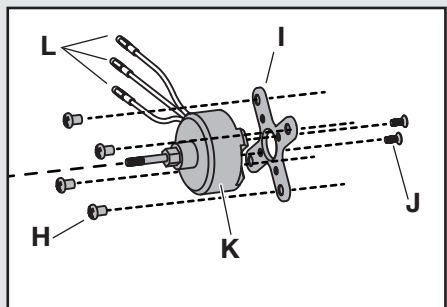
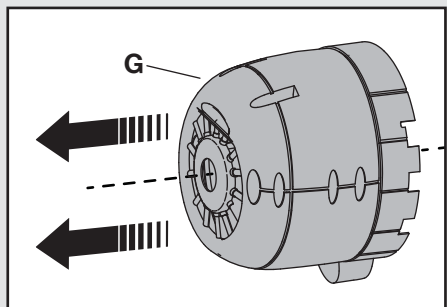


2. Hold the propeller (E) stationary and use a 5mm wrench, pliers, or nut driver to remove the 2.5mm locknut (C) and washer (D). The propeller can then be removed from the motor shaft (F).



Motor and Firewall

1. Carefully remove the cowling (G) from the fuselage. Paint may hold the cowling on the fuselage. Do not use excess force as the cowling plastic is relatively thin and can tear.
2. Remove 4 screws (H) from the motor mount (I) and the fuselage.
3. Remove 2 screws (J) and the motor (K) from the motor mount. The motor magnets may attract screws to the motor.
4. Disconnect the motor wire connectors (L) from the ESC/receiver connectors.
5. Assemble in reverse order.



- Reinstall the propeller by properly fitting it onto the motor shaft, installing the flat washer, and tightening the 2.5mm lock nut with a 5mm wrench, pliers, or nut driver.
- Align the colors of the motor wires and connect them with the ESC wires.
- Correctly center the spinner on the propeller and use only foam-compatible CA (cyanoacrylate adhesive) to attach the spinner to the propeller.

Troubleshooting Guide

Problem	Possible Cause	Solution
Aircraft will not respond to throttle but responds to other controls	ESC did not arm because throttle stick and/or throttle trim too high	Lower throttle stick and throttle trim to lowest setting
	Throttle channel is reversed	Reverse throttle channel on transmitter
	Motor disconnected from ESC	Remove wing from fuselage and make sure motor is connected to the ESC
Extra propeller noise or extra vibration	Damaged propeller, spinner or motor	Replace damaged parts
	Prop nut is too loose	Tighten the prop nut
	Prop is out of balance	Remove and balance propeller, or replace with a balanced propeller.
Reduced flight time or aircraft underpowered	Flight battery charge is low	Completely recharge flight battery
	Propeller installed backwards	Install propeller properly
	Flight battery damaged	Replace flight battery and follow flight battery instructions
	Flight battery is too cold	Make sure battery is warm before use
	Battery capacity too low for flight conditions	Replace battery or use a larger capacity battery
LED on receiver flashes and aircraft will not bind to transmitter (during binding)	Transmitter too near aircraft during binding process	Power off transmitter, move transmitter a larger distance from aircraft, disconnect and reconnect flight battery to aircraft and follow binding instructions
	Bind switch or button not held long enough during bind process	Power off transmitter and repeat bind process. Hold transmitter bind button or switch until receiver is bound
Control surface does not move	Control surface, control horn, linkage or servo damage	Replace or repair damaged parts and adjust controls
	Wire damaged or connections loose	Do a check of wires and connections, connect or replace as needed
	Flight battery charge is low	Fully recharge flight battery
	Control linkage does not move freely	Make sure control linkage moves freely
Controls reversed	Transmitter settings reversed	Adjust controls on transmitter appropriately
Motor power quickly decreases and increases then motor loses power	Battery voltage is down to the point of receiver/ESC Low Voltage Cutoff (LVC)	Recharge flight battery or replace battery that is no longer performing
Motor/ESC is not armed after landing	Over Current Protection (OCP) stops the motor when the transmitter throttle is set high and the propeller cannot turn	Fully lower throttle and throttle trim to arm ESC

Limited Warranty

What this Warranty Covers

Horizon Hobby, Inc. ("Horizon") warrants to the original purchaser that the product purchased (the "Product") will be free from defects in materials and workmanship at the date of purchase.

What is Not Covered

This warranty is not transferable and does not cover (i) cosmetic damage, (ii) damage due to acts of God, accident, misuse, abuse, negligence, commercial use, or due to improper use, installation, operation or maintenance, (iii) modification of or to any part of the Product, (iv) attempted service by anyone other than a Horizon Hobby authorized service center, (v) Product not purchased from an authorized Horizon dealer, or (vi) Product not compliant with applicable technical regulations.

OTHER THAN THE EXPRESS WARRANTY ABOVE, HORIZON MAKES NO OTHER WARRANTY OR REPRESENTATION, AND HEREBY DISCLAIMS ANY AND ALL IMPLIED WARRANTIES, INCLUDING, WITHOUT LIMITATION, THE IMPLIED WARRANTIES OF NON-INFRINGEMENT, MERCHANTABILITY AND FITNESS FOR A PARTICULAR PURPOSE. THE PURCHASER ACKNOWLEDGES THAT THEY ALONE HAVE DETERMINED THAT THE PRODUCT WILL SUITABLY MEET THE REQUIREMENTS OF THE PURCHASER'S INTENDED USE.

Purchaser's Remedy

Horizon's sole obligation and purchaser's sole and exclusive remedy shall be that Horizon will, at its option, either (i) service, or (ii) replace, any Product determined by Horizon to be defective. Horizon reserves the right to inspect any and all Product(s) involved in a warranty claim. Service or replacement decisions are at the sole discretion of Horizon. Proof of purchase is required for all warranty claims. SERVICE OR REPLACEMENT AS PROVIDED UNDER THIS WARRANTY IS THE PURCHASER'S SOLE AND EXCLUSIVE REMEDY.

Limitation of Liability

HORIZON SHALL NOT BE LIABLE FOR SPECIAL, INDIRECT, INCIDENTAL OR CONSEQUENTIAL DAMAGES, LOSS OF PROFITS OR PRODUCTION OR COMMERCIAL LOSS IN ANY WAY, REGARDLESS OF WHETHER SUCH CLAIM IS BASED IN CONTRACT, WARRANTY, TORT, NEGLIGENCE, STRICT LIABILITY OR ANY OTHER THEORY OF LIABILITY, EVEN IF HORIZON HAS BEEN ADVISED OF THE POSSIBILITY OF SUCH DAMAGES. Further, in no event shall the liability of Horizon exceed the individual price of the Product on which liability is asserted. As Horizon has no control over use, setup, final assembly, modification or misuse, no liability shall be assumed nor accepted for any resulting damage or injury. By the act of use, setup or assembly, the user accepts all resulting liability. If you as the purchaser or user are not prepared to accept the liability associated with the use of the Product, purchaser is advised to return the Product immediately in new and unused condition to the place of purchase.

Law

These terms are governed by Illinois law (without regard to conflict of law principals). This warranty gives you specific legal rights, and you may also have other rights which vary from state to state. Horizon reserves the right to change or modify this warranty at any time without notice.

WARRANTY SERVICES

Questions, Assistance, and Services

Your local hobby store and/or place of purchase cannot provide warranty support or service. Once assembly, setup

or use of the Product has been started, you must contact your local distributor or Horizon directly. This will enable Horizon to better answer your questions and service you in the event that you may need any assistance. For questions or assistance, please visit our website at www.horizonhobby.com, submit a Product Support Inquiry, or call 877.504.0233 toll free to speak to a Product Support representative.

Inspection or Services

If this Product needs to be inspected or serviced and is compliant in the country you live and use the Product in, please use the Horizon Online Service Request submission process found on our website or call Horizon to obtain a Return Merchandise Authorization (RMA) number. Pack the Product securely using a shipping carton. Please note that original boxes may be included, but are not designed to withstand the rigors of shipping without additional protection. Ship via a carrier that provides tracking and insurance for lost or damaged parcels, as Horizon is not responsible for merchandise until it arrives and is accepted at our facility. An Online Service Request is available at Horizon Hobby Service Center. If you do not have internet access, please contact Horizon Product Support to obtain a RMA number along with instructions for submitting your product for service. When calling Horizon, you will be asked to provide your complete name, street address, email address and phone number where you can be reached during business hours. When sending product into Horizon, please include your RMA number, a list of the included items, and a brief summary of the problem. A copy of your original sales receipt must be included for warranty consideration. Be sure your name, address, and RMA number are clearly written on the outside of the shipping carton.

NOTICE: Do not ship LiPo batteries to Horizon. If you have any issue with a LiPo battery, please contact the appropriate Horizon Product Support office.

Warranty Requirements

For Warranty consideration, you must include your original sales receipt verifying the proof-of-purchase date. Provided warranty conditions have been met, your Product will be serviced or replaced free of charge. Service or replacement decisions are at the sole discretion of Horizon.

Non-Warranty Service

Should your service not be covered by warranty, service **will be completed and payment will be required without notification or estimate of the expense unless the expense exceeds 50% of the retail purchase cost.** By submitting the item for service you are agreeing to payment of the service without notification. Service estimates are available upon request. You must include this request with your item submitted for service. Non-warranty service estimates will be billed a minimum of ½ hour of labor. In addition you will be billed for return freight. Horizon accepts money orders and cashier's checks, as well as Visa, MasterCard, American Express, and Discover cards. By submitting any item to Horizon for service, you are agreeing to Horizon's Terms and Conditions found on our website Horizon Hobby Service Center.

NOTICE: Horizon service is limited to Product compliant in the country of use and ownership. If non-compliant product is received by Horizon for service, it will be returned unserviced at the sole expense of the purchaser.


Warranty and Service Information

Country of Purchase	Horizon Hobby	Address	Phone Number/Email Address
United States of America	Horizon Service Center (Electronics and engines)	4105 Fieldstone Rd Champaign, Illinois 61822 USA	877-504-0233 Online Repair Request visit: www.horizonhobby.com/service
	Horizon Product Support (All other products)	4105 Fieldstone Rd Champaign, Illinois 61822 USA	877-504-0233 productsupport@horizonhobby.com
United Kingdom	Horizon Hobby Limited	Units 1-4 Ployters Rd Staple Tye Harlow, Essex CM18 7NS United Kingdom	+44 (0) 1279 641 097 sales@horizonhobby.co.uk
Germany	Horizon Technischer Service	Christian-Junge-Straße 1 25337 Elmshorn Germany	+49 (0) 4121 2655 100 service@horizonhobby.de
France	Horizon Hobby SAS	14 Rue Gustave Eiffel Zone d'Activité du Réveil Matin 91230 Montgeron	+33 (0) 1 60 47 44 70 infofrance@horizonhobby.com
China	Horizon Hobby – China	Room 506, No. 97 Changshou Rd. Shanghai, China, 200060	+86 (021) 5180 9868 info@horizonhobby.com.cn

Compliance Information for the European Union

Declaration of Conformity

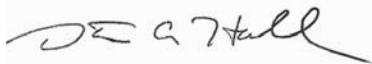
(in accordance with ISO/IEC 17050-1)
No. HH2012051301

	Product(s):	EFL A6M5 Zero 300
	Item Number(s):	EFL6175
	Equipment class:	1

The object of declaration described above is in conformity with the requirements of the specifications listed below, following the provisions of the European R&TTE directive 1999/5/EC:

EN 301 489-1 V1.7.1: 2006
EN 301 489-17 V1.3.2: 2008

Signed for and on behalf of:
Horizon Hobby, Inc.
Champaign, IL USA
May 13, 2012



Steven A. Hall
Vice President

International Operations and Risk Management
Horizon Hobby, Inc.

Instructions for disposal of WEEE by users in the European Union



This product must not be disposed of with other waste. Instead, it is the user's responsibility to dispose of their waste equipment by handing it over to a designated collections point for the recycling of waste electrical and electronic equipment. The separate collection and recycling of your waste equipment at the time of disposal will help to conserve natural resources and ensure that it is recycled in a manner that protects human health and the environment. For more information about where you can drop off your waste equipment for recycling, please contact your local city office, your household waste disposal service or where you purchased the product.

– Replacement Parts –
– Ersatzteile –
– Pièces de rechange –
– Parti di ricambio –

Part # • Nummer Numéro • Codice	Description	Beschreibung	Description	Descrizione
EFL617501	Fuselage: A6M5 Zero 300	E-flite Rumpf : A6M5 Zero 300	A6M5 Zero 300 -Fuselage	Fusoliera: A6M5 Zero 300
EFL617502	Wing: A6M5 Zero 300	E-flite Tragfläche: A6M5 Zero 300	A6M5 Zero 300 -Aile	Ala: A6M5 Zero 300
EFL617503	Canopy Hatch: A6M5 Zero 300	E-flite Kabinenhaube : A6M5 Zero 300	A6M5 Zero 300 -Verrière	Capottina: A6M5 Zero 300
EFL617504	Cowling: A6M5 Zero 300	E-flite Motorhaube : A6M5 Zero 300	A6M5 Zero 300 -Capot	Capottina motore: A6M5 Zero 300
EFL617505	7x6e Propellers (2) A6M5 Zero 300	E-flite Propeller (2): A6M5 Zero 300	A6M5 Zero 300 -Hélice 7x6e (2)	Eliche 7x6e (2) A6M5 Zero 300
EFL617506	Spinner: A6M5 Zero 300	E-flite Spinner: A6M5 Zero 300	A6M5 Zero 300 -Cône	Ogiva: A6M5 Zero 300
EFL617507	Pushrods with Clevis: A6M5 Zero 300	E-flite Gestänge mit Gabelköpfen : A6M5 Zero 300	A6M5 Zero 300 -Tringleries avec chapes	Comandi con forcelle: A6M5 Zero 300
EFL617508	Display Bomb with Guns: A6M5 Zero 300	E-flite Display Bomben und MG's : A6M5 Zero 300	A6M5 Zero 300 -Bombe factice avec canons	Supporto bombe con armi: A6M5 Zero 300
EFL617509	Control Horns: A6M5 Zero 300	E-flite Ruderhörner : A6M5 Zero 300	A6M5 Zero 300 -Guignols	Squadrette: A6M5 Zero 300
EFLM7000	Motor: 300 Brushless Outrunner, 1400Kv	E-flite Motor: 300 Brushless Aussenläufer 1400Kv	Moteur Brushless 300 à cage tournante, 1400Kv	Motore: 300 Brushless cassa rotante, 1400Kv
EFLA7300	10-Amp Brushless ESC	E-flite 10-Amp Brushless ESC	Contrôleur Brushless 10A	Regolatore (ESC) 10-Amp Brushless
EFLR7100	3.5 g Digital Sub-Micro Servo	E-flite 3.5g Digital Servo	Sub micro servo digital 3.5g	Servo digitale Sub-Micro 3.5 g
EFLR710001	Gear Set: EFLR7100	E-flite Getriebe Set: EFLR7100	Jeu de pignons : EFLR7100	Set ingranaggi per EFLR7100
EFLR710002	Servo Arm Set: EFLR7100	E-flite Servo Arm Set: EFLR7100	Bras de servos EFLR7100	Set squadrette per EFLR7100
EFLA286	Display Stand: 300-Size Warbirds	E-Flite Display Ständer 300-Size Warbirds	Socle pour warbird classe 300	Piedestallo esposizione: per caccia classe 300
EFLA287	O-Ring Tool: 300-size Warbirds	E-flite O-Ring Werkzeug : 300er Warbirds	Outil à joint torique pour warbird classe 300	Attrezzo O-Ring: per caccia classe 300
EFLA288	O-Rings (3): 300-size Warbirds	E-flite O-Ringe (3): 300er Warbirds	Joints toriques (3) pour warbird classe 300	O-Rings (3): per caccia classe 300
SPMAR6310	AR6310 DSMX Nanolite 6-Channel Receiver	Spektrum 6 Kanal Nanolite Empfänger DSM X	Récepteur AR6310 DSMX Nanolite 6 voies	Ricevitore 6 canali AR6310 DSMX Nanolite

– Optional Parts and Accessories –
– Optionale Bauteile und Zubehörteile –
– Pièces optionnelles et accessoires –
– Parti opzionali e accessori –

Part # • Nummer Numéro • Codice	Description	Beschreibung	Description	Descrizione
EFLA230	Charger Lead with JST Female	E-flite Ladekabel m/ JST Buchse	Câble de charge avec prise JST femelle	Cavo di carica con femmina JST
EFLA250	Park Flyer Tool Assortment, 5 pc	Park Flyer Werkzeugsortiment, 5 teilig	Assortiment d'outils Park Flyer, 5pc	Park Flyer assortimento attrezzi, 5 pc
EFLB4302S	430mAh 2S 7.4V 25C Li-Po	430mAh 2S 7.4V 25C Li-Po Akku	Batterie Li-Po 7.4V 2S 430mA 25C	Batteria Li-Po-430mAh 2S 7.4V 25C
EFLB4502S30	450mAh 2S 7.4V 30C Li-Po	450mAh 2S 7.4V 30C Li-Po Akku	Batterie Li-Po 7.4V 2S 450mA 30C	Batteria Li-Po-450mAh 2S 7.4V 30C
EFLC3005	DC 1-3S Li-Po Charger	DC 1-3S Li-Po Ladegerät	Chargeur Li-Po DC 1-3S	Caricabatterie Li-Po CC da 1-3S
	DX4e DSMX 4-channel Transmitter	Spektrum DX4Ee DSMX 5 Kanalsender ohne Empfänger	Emetteur DX4e DSMX 4 voies	DX4e DSMX Trasmettitore 4 canali
	DX5e DSMX 5-channel Transmitter	Spektrum DX5Ee DSMX 5 Kanalsender ohne Empfänger	Emetteur DX5e DSMX 5 voies	DX5e DSMX Trasmettitore 5 canali
	DX6i DSMX 6-Channel Transmitter	DX6i DSMX 6-Kanal Sender	Emetteur DX6i DSMX 6 voies	DX6i DSMX Trasmettitore 6 canali
	DX7s DSMX 7-Channel Transmitter	Spektrum DX7s 7 Kanal Sender	Emetteur DX7s DSMX 7 voies	DX7s DSMX Trasmettitore 7 canali
	DX8 DSMX Transmitter	Spektrum DX8 nur Sender	Emetteur DX8 DSMX 8 voies	DX8 DSMX Solo trasmettitore

– Parts Contact Information –
– Intaktinformationen für Ersatzteile –
– Coordonnées pour obtenir des pièces détachées –
– Contatti per le parti di ricambio –

Country of Purchase	Horizon Hobby	Address	Phone Number/Email Address
United States	Sales	4105 Fieldstone Rd Champaign, Illinois, 61822 USA	800-338-4639 sales@horizonhobby.com
United Kingdom	Horizon Hobby Limited	Units 1-4 Ployters Rd Staple Tye Harlow, Essex CM18 7NS, United Kingdom	+44 (0) 1279 641 097 sales@horizonhobby.co.uk
Germany	Horizon Hobby GmbH	Christian-Junge-Straße 1 25337 Elmshorn, Germany	+49 (0) 4121 2655 100 service@horizonhobby.de
France	Horizon Hobby SAS	14 Rue Gustave Eiffel Zone d'Activité du Réveil Matin 91230 Montgeron	+33 (0) 1 60 47 44 70 infofrance@horizonhobby.com
China	Horizon Hobby – China	Room 506, No. 97 Changshou Rd. Shanghai, China, 200060	+86 (021) 5180 9868 info@horizonhobby.com.cn

© 2012 Horizon Hobby, Inc.

E-flite, JR, Celectra, DSM, DSM2, and Bind-N-Fly are trademarks or registered trademarks of Horizon Hobby, Inc.

DSMX is a trademark of Horizon Hobby, Inc., registered in the U.S.

The Spektrum trademark is used with permission of Bachmann Industries, Inc.

Futaba is a registered trademark of Futaba Denshi Kogyo Kabushiki Kaisha Corporation of Japan.

Patents pending

www.e-fliterc.com

